

ForestPro™

INNOVATION FROM STUMP TO MILL | 2017 BUYERS' GUIDE



2017 **BUYERS'**
GUIDE

Louisiana **CAT**

The only thing in the forest with more history than us? **The trees.**



With roots in North Louisiana, the Louisiana Cat family has grown with the families of loggers for more than 80 years. Our expertise has helped loggers get ahead.

Few work environments present as many challenges and physical demands as that of the forestry industry. Like all the machines we sell, our service and support teams are made for demanding work, too.

To learn more about how you can harvest more profits from the forest or take advantage of our Used Equipment fleet, call on an old pro — your Louisiana Cat Forestry Rep.

866-843-7440



LouisianaCatForestPro.com

© 2017 Caterpillar. All Rights Reserved. CAT, CATERPILLAR, BUILT FOR IT, their respective logos, "Caterpillar Yellow", the "Power Edge" trade dress as well as corporate and product identity used herein, are trademarks of Caterpillar and may not be used without permission.

Welcome

to the **2017 Buyers' Guide**

You're invited to look over the complete lineup of Cat Forest Products designed to meet your every machine need from stump to mill.

The door is always open at our dealership to assist you with machine selection, application, configuration and financing for the products you need to succeed with sustainable harvesting and land management, forestry road building and millyard work. We are the single source for all your logging needs.

Contents

4 | LOGGING EQUIPMENT

- Skidders
- Feller Bunchers
- Harvesters
- Knuckleboom Loaders
- Forestry Machines
- Forwarders

11 | FUEL EFFICIENCY

12 | ROAD BUILDING

- Hydraulic Excavators
- Dozers

14 | MILLYARD

- Wheel Loaders
- Material Handlers
- Skid Steer Loaders
- Dozers

16 | LAND MANAGEMENT

- Site Prep Tractor
- Compact Track Loaders
- Hydraulic Excavators

18 | FORESTRY ATTACHMENTS



QUIET YET POWERFUL

CAT® FORESTRY MACHINES SET NEW STANDARDS FOR PRODUCTION, PERFORMANCE AND RELIABILITY

THERE'S A CAT FORESTRY MACHINE to meet your every logging and harvesting need from mountain side to landing.

SKIDDERS | 525D, 535D, 545D, 555D

WHEEL SKIDDERS - 525D, 535D, 545D, 555D

- **Gross Power:** 203 hp – 275 hp
- **Grapple Capacity:** 14.4 sq ft – 22.0 sq ft
- **Wheelbase:** 143.8 in – 160.7 in
- **Weight–Dual Function:** 45,249 lb – 47,488 lb
- Greater productivity at lower operating cost
- Six-speed transmission, lock-up torque converter and independent front and rear differential locks provide more control
- Stable machines with roomy, comfortable operator environments
- Advanced hydraulics speed cycle times and deliver greater lift capacity
- D Series runs cool and quiet and helps prevent debris from collecting inside the machine
- Tilting cab and access points reduce daily maintenance and servicing time



FELLER BUNCHERS | 521B, 522B, 541 SERIES 2, 552 SERIES 2, 553C, 563C, 573C

TRACK FELLER BUNCHERS - 521B, 522B, 541 SERIES 2, 552 SERIES 2

- **Gross Power:** 303 hp (all models)
- **Operating Weight:** (without heads/standard counterweight) 60,629 lb – 78,960 lb
- Boom Control Feature that helps operator complete a harvesting motion using simple joystick movements is now standard on all track feller buncher models
- High Speed Boom Configuration available on the 541 Series 2 significantly decreases cycle times and increases productivity in high production applications
- Smoother hydraulic performance, increased engine horsepower
- More comfortable operator station
- Four different models enable machines to work in a variety of applications, that vary from steep slope thinning to high production final harvests
- 522B and 552 Series 2 feature industry's only 3-cylinder leveling system with simultaneous forward and side-to-side tilting throughout the full range of motion for greater operator comfort and productivity on steep terrain
- Robust undercarriage utilizes proven components customized for demanding forestry conditions
- Unique boom designs provide industry-leading lift capacity throughout the working envelope, to aid production in large timber
- Four models offer horsepower range, track size and hydraulic configurations to match your forestry application needs

WHEEL FELLER BUNCHERS - 553C, 563C, 573C

- **Gross Power:** 174 hp – 241 hp
- **Wheelbase:** 110 in – 115 in
- **Operating Weight:** (w/o attachment) 30,560 lb – 31,840 lb
- 553C is designed for thinning to final harvest on primarily flat terrain
- Versatile 563C provides excellent stability on flat or hilly terrain balancing power and fuel economy with short wheelbase to improve agility
- Fuel-efficient 573C excels in severe, ultra-high production applications in large timber on adverse terrain and is the most powerful and stable machine on the market



HARVESTERS | 501HD, 521B, 522B, 541 SERIES 2, 552 SERIES 2

- **Gross Power:** 163 – 303 hp
- **Reach:** Fixed Boom: 19 ft 10 in; Telescopic Boom: 26 ft 0 in
- **Operating Weight:** (without heads/standard counterweight) 40,000 lb – 79,700 lb
- **501HD:** Forward-mounted cab and rear engine placement provide excellent operator visibility over the entire harvest area
- Purpose-built, front-entry cab enables easy entry and exit, plus cab tilts for servicing
- Two boom configurations to meet varying application and silvicultural needs
- **521B, 522B, 541 Series 2, 552 Series 2:** Four models are available to suit a diverse portfolio of applications
- Undercarriages are customized for demanding forestry conditions, including industry-leading ground clearance
- Different harvester configurations deliver 8,800 lb – 16,900 lb of bare pin lift capacity at max reach, a huge benefit in large timber
- Full-length track guards maximize shoe support in all types of terrain



TRAILER MOUNT - 559C, 579C

- **Gross Power:** 174 hp
- **Knuckleboom Length:** 32 ft
- **Operating Weight:** 34,100 lb – 36,480 lb
- Swing torque ratings up to nearly 75,000 lbf
- With swing speeds up to 11 rpm, Cat® loaders provide powerful performance in all applications from shortwood loading to drag loading and pull-through delimbing



FOREST MACHINES | 320D FM, 324D FM, 325D FM, 568

- **Gross Power:** 157 hp – 291 hp
- **Operating Weight:** 59,315 lb – 95,204 lb
- Hydraulic systems provide reliable performance and outstanding uptime
- Standard Product Link™ keeps forest machines on the job by tracking service, maintenance, working hours and location
- Wide selection of forest machine configurations (log loader, heel-type loader, roadbuilder, and delimber carrier) meet diverse forestry applications and improve productivity
- Purpose-built forestry cab maximizes operator space for exceptional comfort, excellent sightlines and reduces operator fatigue
- D Series' rugged mainframe ensures durability
- Advanced, reinforced carbody withstands rugged forestry applications
- Purpose-built upper frame, boom, stick and carbody use advanced manufacturing processes—all supported by the largest swing bearing in the industry to ensure durability and reliability
- Longer undercarriage delivers greater stability







FORWARDERS | 564, 574, 584, 584HD

DESIGNED FOR USE IN THINNING OPERATION or final felling, forwarders are critical to your logging operation's success. Cat® Forwarders have proven, over-sized components, including heavy-duty axles, to keep uptime and production high.

- **Gross Power:** 174 hp – 274 hp
- **Loader Reach:** 22.9 ft – 27.89 ft
- **Bunk Length:** 16 ft – 18.5 ft
- **Load Capacity:** 30,000 lb – 44,092 lb
- **Operating Weight:** 36,000 lb – 50,900 lb
- Solid working platform with sturdy front and rear structures ensures outstanding durability and long service life
- Balanced hydraulics provide continuous, reliable and responsive control
- Spacious, purpose-built cab with excellent visibility to the work area
- Forwarders utilize the latest technology with CAN-Bus controlled IQAN system, switch panels, and engine control

FIVE-MINUTE RULE

Reducing idle time improves fuel efficiency

DECREASING MACHINE IDLE TIME IS KEY to improving your fleet's fuel efficiency. Idle time cannot be eliminated because of warm up and shut down requirements, but it can be controlled and reduced. Seven sure-fire methods to reduce idle time:

1. **Education** – Reviewing fuel consumption data and fuel costs with employees helps educate them on idling's effect to equipment and overall fleet operation.
2. **Limit warm up time** – Equipment warm up time at the start of shifts varies by ambient conditions, but as rule of thumb warm up times can be limited to five minutes.
3. **Five-minute idle rule** – If a machine idles for more than five minutes, shut it down. Restarting equipment uses less fuel than idling for extended periods of time.
4. **Limit cool down time** – Machines should be idled when shifts end so that turbochargers and emission systems can cool and purge. In general, idling for two minutes at the end of the shift enables most equipment to reach optimum shutdown temperatures.

5. **Idle management systems*** – Some equipment is equipped with "auto-idle" or "engine idle management" systems. These systems monitor equipment parameters and automatically reduce engine rpm to reduce idle fuel consumption to less than one gallon per hour.

6. **Breaks and lunch** – Don't idle machines during breaks and lunch periods. Some operators do this to keep the cab at temperature. Systems such as engine off cab heaters and coolers can reduce the "need" to idle over breaks.

7. **Monitoring asset utilization** – Use telematics, such as Product Link™, to monitor equipment use and set benchmarks to identify opportunities to reduce idling time.

Talk with experts at our dealership. Visit www.cat.com/en_us/rethink-the-tank to learn more ways to improve your fleet's fuel efficiency.

* All features not available on every machine.



Scan the QR Code with your smart phone to learn more about maximizing fuel efficiency.



OPENING ACCESS

CAT® DOZERS, EXCAVATORS EFFICIENT ROAD BUILDERS

FOR PIONEERING, BUILDING AND MAINTAINING critical access roads, Caterpillar offers a complete line of fuel efficient, powerful dozers and excavators to open and maintain your access roads.

MEDIUM EXCAVATORS | 320F L, 323F L, 325F L, 326F L, 330F L, 335F L, 336F L, 349F L

New F Series models feature high-efficiency Tier 4 Final engines, advanced hydraulics, spacious cabs plus standard integrated technologies that boost productivity and cut operating costs.

- **Gross Power:** 161 hp – 396 hp
- **Operating Weight:** 54,450 lb – 117,500 lb
- Fuel-efficient hydraulic excavators help keep your production numbers high and your owning and operating costs low
- Exclusive upper frame swing bearing has more surface contact area to improve stability, reduce machine pitching and provide longer life
- Product Link™ enables you to monitor machine health remotely and easily track hours of use and location for improved security in remote logging operations



MEDIUM DOZERS | D6K2, D6N, D6T, D7E

- **Gross Power:** 130 hp – 238 hp
- **Operating Weight:** 29,258 lb – 57,441 lb
- D6K2, D6N, D6T and D7E all meet U.S. Tier 4 Final emission standards.
- Powershift transmission and differential steering work in tandem with Cat® engine to deliver outstanding power, productive performance and reliability
- Available heavy-duty undercarriage is designed for extended wear life in abrasive conditions and high-impact forestry applications





RELIABLE PERFORMERS

TEAMWORK IN THE MILLYARD IS ESSENTIAL FOR SUCCESS

Versatile Cat® MILLYARD MACHINES ARE DESIGNED AND BUILT TO work together as a synchronized team to maximize millyard space, optimize material flow and reduce costs. Wheel loaders, dozers, material handlers and skid steer loaders all work together efficiently and cost effectively to maximize your millyard productivity and profitability.

WHEEL LOADERS | 926M, 930M, 938M, 950M, 950 GC, 962M, 966M, 966M XE, 972M, 972M XE, 980M, 982M, 986H, 988K, 990K

SMALL - 926M, 930M, 938M

- **Gross Power:** 153 hp – 188 hp
- **Operating Weight:** 28,770 lb – 36,216 lb
- Use pallet or log and lumber forks to move finished lumber and palletized goods into inventory or onto trucks leaving the mill
- Optimized, parallel lift Z-bar loader linkage provides superior performance and versatility
- Spacious cabs feature excellent visibility, class-leading low sound levels, comfortable seating and ergonomic joystick controls

MEDIUM - 950M, 950 GC, 962M, 966M, 966M XE, 972M, 972M XE, 980M, 982M

- **Gross Power:** 230 hp – 398 hp
- **Operating Weight:** 42,357 lb – 78,382 lb
- Fuel-efficient M Series feature Tier 4 Final engines equipped with proven electronic, fuel, air and aftertreatment components to reduce emissions, improve performance and fuel efficiency
- Lock-up clutch torque converter enables you to climb ramps without losing speed
- Disc-type differential locks improve traction when the millyard is slippery or muddy

LARGE - 986H, 988K, 990K

- **Gross Power:** 409 hp – 699 hp
- **Operating Weight:** 96,379 lb – 202,398 lb
- Powerful 988K and 990K are available in highly durable millyard arrangements specifically designed to meet the unique and demanding conditions of modern millyards

MATERIAL HANDLERS | MH3022, MH3024

- **Gross Power:** 174 hp
- **Operating Weight:** 47,399 lb – 59,525 lb
- **Travel Speed:** 16 mph
- Cat® material handlers' increased lifting capacity, improved cycle times and ease of operation deliver enhanced operator comfort, increased productivity and lower operating costs
- Sort and stack wood higher in a compact footprint



SKID STEER LOADERS | 226D, 232D, 236D, 242D, 246D, 262D, 272D, 272D2, 272D2 XHP

- **Gross Power:** 73.2 hp – 106 hp
- **Operating Weight:** 5,705 lb – 9,255 lb
- **Rated Operated Capacities:** 1,550 lb – 3,700 lb
- Maneuverable skid steer loaders clean up wood debris from work areas to aid fire prevention efforts
- Skid steer loaders offer power, versatility, efficiency, ease of operation and reliability to meet diverse millyard chores



DOZERS | D7E, D8T, D9T

- **Gross Power:** 238 hp – 436 hp
- **Operating Weight:** 57,441 lb – 106,618 lb
- Engine emissions meet Tier 4 Final
- All models deliver extraordinary power with smooth, precise control
- Comfortable, roomy operator compartments enable greater productivity
- Blade and undercarriage configurations match chip pile dozing needs
- Cat dozers deliver outstanding versatility, productivity and resale value



LAND MANAGEMENT MACHINES

THE WIDEST SELECTION OF SPECIALIZED MACHINES IN THE INDUSTRY

SUSTAINABLE LAND MANAGEMENT DEMANDS A VARIETY OF TASKS—clearing right-of-ways, cutting brush, reforestation and even fighting fires. Caterpillar offers the widest selection of specialized land management machines and attachments in the industry to handle every need efficiently and cost effectively.

SITE PREP TRACTOR | 586C

- **Gross Power:** 350 hp
- **Operating Weight:** 38,450 lb
- Rugged, multi-purpose tool carrier with the power, stability and balance to handle large- or small-scale landclearing and maintenance
- Powerful hydraulics push more flow to demanding attachments, such as mulchers and brushcutters
- High-capacity cooling system and on-demand reversing fan keep the machine running cool
- Advanced controls, including Terrain Selection Mode, Creep Mode, Road Steer Mode, and optional Attachment Float Control, enhance machine capabilities
- Pressurized engine compartment repels debris to reduce cleaning time
- Daily service points are easily accessible / ground-level refueling
- Tilting cab provides easy access to components and hinged access panels offer three-sided access to the engine and hydraulic pumps

COMPACT TRACK LOADER | 299D XHP



300 SERIES EXCAVATORS | 316F L, 318F L, 320F L, 323F L, 325F L, 326F L, 330F L, 335F L, 336F L, 349F L

CAT® 300 SERIES EXCAVATORS DELIVER THE FUEL EFFICIENT POWER FOR reach, lift capacity, breakout force and digging depth necessary for a wide variety of land management tasks. And with the large array of models available, our dealership can help you select the right size, power and configuration to meet your land management needs.

SMALL - 316F L, 318F L

- **Gross Power:** 117 hp
- **Operating Weight:** 39,710 lb and 42,340 lb
- Speed control maximizes performance, minimizes fuel consumption
- Regenerated oil flow in boom cylinder during boom-down operation saves energy and improves fuel efficiency

MEDIUM - 320F L, 323F L, 325F L, 326F L, 330F L, 335F L

- **Gross Power:** 161 hp – 200 hp
- **Operating Weight:** 49,200 lb – 81,315 lb
- Upper frames feature mountings to support the heavy-duty cab and are reinforced in high-stress areas like the boom foot and skirt
- Variety of boom options available to meet your forestry application needs

LARGE - 336F L, 349F L

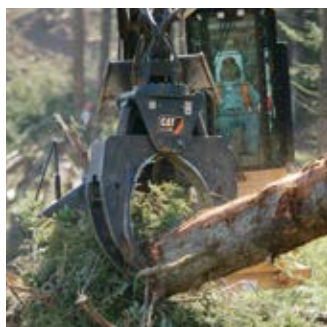
- **Gross Power:** 306 hp – 417 hp
- **Operating Weight:** 88,800 lb – 117,500 lb
- Booms are built using large box-section structures with thick, multi-plate fabrication, castings and forgings in high-stress areas
- Comfortable operator stations provide outstanding visibility and easy, comfortable access to all controls and switches



VERSATILITY ADDS PROFIT

ATTACHMENTS MEET SPECIFIC NEEDS TO IMPROVE MACHINE VERSATILITY AND PROFITABILITY

CAT® ATTACHMENTS ARE DESIGNED AND BUILT TO WORK EFFECTIVELY. They increase your fleet's versatility and productivity with a wide range of buckets, grapples, blades, brush cutters and thumbs. Consult our dealership about application-matched attachments for your forestry machines. Check out some of the attachments available:



Attachments

FOREST MACHINES

- Grapples
- Harvester Heads
- Directional Felling Heads

KNUCKLEBOOM LOADERS

- Delimbers
- Grapples
- Grapple Saws

EXCAVATORS

- Augers
- Buckets
- Grapples
- Thumbs

DOZERS

- Blades
- Rakes
- Rippers
- Winches

SKID STEER, MULTI TERRAIN, COMPACT TRACK LOADERS AND SITE PREP TRACTORS

- Augers
- Backhoes
- Brushcutters
- Buckets
- Material Handling Arms
- Mulchers
- Landscape Rakes
- Power Box Rakes
- Stump Grinders
- Tillers
- Trenchers

PUT NEW LIFE INTO YOUR EXISTING FORESTRY FLEET



SKIDDER Certified Power Train Rebuild

LIMITED TIME REBUILD OFFER!

Cat Certified Power Train Rebuild with Genuine Cat Parts and Skilled Louisiana Cat Technicians.

Available for Models: 525, 535, and 545

\$125,000

- Maximum Productivity
- Cost-Effective
- Improved Reliability and Availability
- Greater Return on Your Equipment Investment

The Cat Certified Power Train Rebuild restores your machine's power train to like-new performance. This service covers the engine, transmission, torque converter, final drives and axles. Give us a call today to schedule your rebuild!

Price includes: Parts, Disassembly and Assembly Labor, and Machine Shop Labor.



866-843-7440

LouisianaCatForestPro.com

Louisiana **CAT**

© 2017 Caterpillar. All Rights Reserved. CAT, CATERPILLAR, BUILT FOR IT, their respective logos, "Caterpillar Yellow," the "Power Edge" trade dress as well as corporate and product identity used herein, are trademarks of Caterpillar and may not be used without permission.

Sign up now to continue receiving **FREE** copies of *ForestPro* magazine!

ForestPro delivers timely, informative messages about loggers who provide solutions to the challenges and concerns they face in today's forestry industry.

You'll read compelling, highly-credible stories from loggers in their own words about how they use their Cat forestry machines to achieve more efficient, safer and more profitable logging operations.

To ensure you continue receiving future copies of **ForestPro** magazine, go to **LouisianaCatForestPro.com** or click on the code below to register to receive a digital version emailed directly to you.

If you have a success story that you would like to share and be considered for appearance in **ForestPro** magazine, simply complete the form on the website.



Scan the QR Code with your smart phone to sign up to get your free issue of ForestPro.

Louisiana CAT

LouisianaCat.com