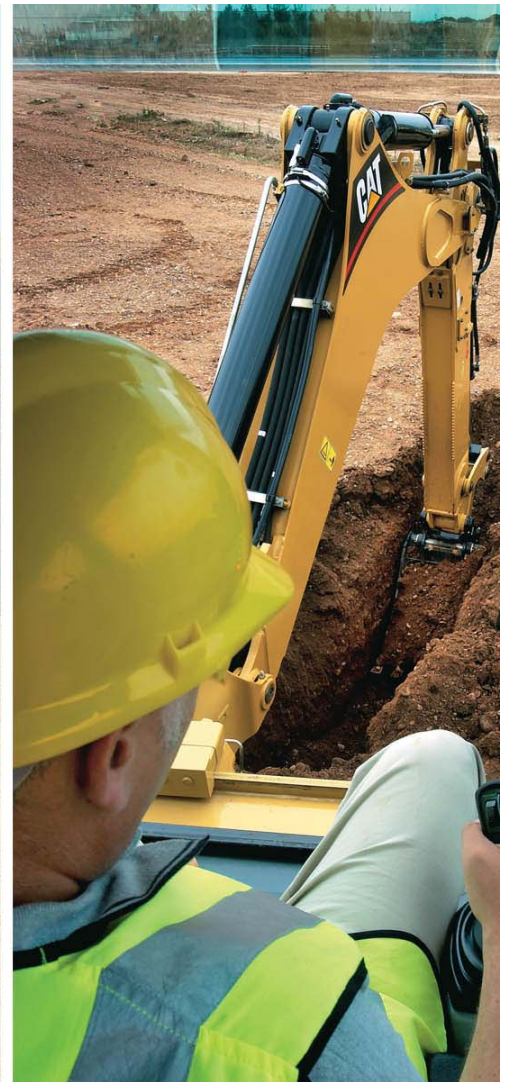


2023

HEAVY EQUIPMENT OPERATOR TRAINING CATALOG



Training Makes a Difference

TABLE OF CONTENTS	PAGE
Staff and Important Training Information _____	3
Machine Operator Training Introduction _____	4

AVAILABLE TRAINING

Basic Machine Safety and Familiarization _____	5
Level I – Competent Operator Training _____	6
Level II – Professional Operator Training _____	7
Virtual Machine Simulator Training _____	8
Track Type Tractor _____	9
Hydraulic Excavator _____	10
Articulated Trucks _____	11
Training Request Form _____	12

STAFF

Merritt Parsons
Director of Training & Development

Randy Tyrone
Certified Dealer Instructor

Ross Meche
Certified Dealer Operator

Michael Deloach
Certified Dealer Operator

Camille Nereaux
Service Training Coordinator

CORPORATE OFFICE

Louisiana Cat
3799 West Airline Hwy.
Reserve, LA. 70084
985-536-1121
985-536-4549 Fax

INFORMATION / REGISTRATION training@louisianacat.com
(985) 536-0494 Tel
(985) 536-0947 Fax

SCHEDULING

Upon request, Louisiana Cat will assist each customer in scheduling their requested training sessions.

SAFETY EQUIPMENT/ PROPER ATTIRE

Students must have approved safety glasses with side shields and wear safety shoes. Sessions involve hands on machine operating activities, suitable attire is suggested; short pants, sleeveless shirts and canvas tennis shoes are not allowed. Students dressed inappropriately will not be able to participate in exercises. Reimbursements will not be given for class costs.

CANCELLATION POLICY

A cancellation fee of \$250 applies if notification is not provided in advance of 48 hours prior to the scheduled training date. If there is failure to provide advance notification of cancellation, the full cost of training will be due at that time. If Louisiana Cat cancels the training for any reason, no fee will be charged.

MACHINE OPERATOR TRAINING

Machine operator training is broken down into a **familiarization module** that is model specific and **three operator progression levels**. These progression courses begin with teaching basic operating techniques for entry level operators and later work on sharpening the skills of the more advanced machine operators.

Benefits of machine operator training include:

- Increased operator efficiency; completing jobs before deadline.
- Increased operator awareness of equipment maintenance.
- Decreased operator accidents.
- Reduced downtime, operating and maintenance costs.
- Better company safety ratings that lowers insurance costs.



BASIC MACHINE SAFETY AND FAMILIARIZATION

The focus of this course is to educate and familiarize experienced operators with regards to a specific machine model. It will provide knowledge and understanding of the machines' systems and controls. This training is usually associated with the introduction and/or purchase of a new machine model.

The focus will be on the following areas:

- Safety
- Walk Around Inspection
- ISO Symbols
- Monitoring System
- Machine Controls

Duration: ½ day session – Approx. 4 hours; Maximum 10 students per session

Cost: \$650* plus Travel Expenses per session

Two sessions may be held per day for extra personnel, if needed

*Pricing is based on customer supplied equipment and training location. Machine rental can be arranged for an additional charge if needed.

LEVEL I - COMPETENT OPERATOR TRAINING

This course is designed for entry-level students or untrained operators interested in or pursuing a career as a heavy equipment operator. It will provide a base foundation for students to develop their skills to operate equipment safely and proficiently. Upon completion, a Louisiana Cat training certificate will be provided.

The focus will be on the following areas:

- Operator Safety Awareness
- Walk Around Inspections
- ISO Symbols
- Monitoring Systems
- Warning Categories and Operator Reactions
- Proper Start Up and Shut Down Procedures
- Machine Controls
- Basic Operating Techniques

Duration: 1 day – Approx. 8 hours; Maximum 10 students per session

Cost: \$1,800* per session per Machine Type

Additional Fees: Premium Rates may apply on weekends and holidays

*Pricing is based on customer needs, supplied equipment and training location.

Note:** If more than one Level 1 training session is delivered for different machines types, (Example; Dozers & Excavators) then this will result in (2) Level 1 charges @ \$1,800.00 per machine type session.

LEVEL II - PROFESSIONAL OPERATOR TRAINING

This course is designed for refinement and enhancement of experienced operator skills and will be conducted at a Louisiana Cat facility. Upon completion, a Louisiana Cat training certificate will be provided.

The focus will be on the following areas:

- Refining operating techniques
- Learning application tips and information
- Safety and maintenance inspections
- Monitoring systems
- Control familiarization and applications
- Additional supervised equipment operation ("stick time").
- Coaching to fine tune experienced operator skills.

Duration: 2 days – Approx. 8 hours per day; Maximum 4 students per session

Cost: \$1,875* per student for each machine type session

Additional Fees: Premium Rates may apply on Weekends and Holidays

*Advance notification of at least two weeks needed to arrange this training. Please contact training@louisianacat.com for more information.

Note**: If more than one Level 2 training session is performed for different machines types, (Example; Dozers & Excavators) then this will result in (2) Level 2 charges @ \$1,875.00 per person, per session.

VIRTUAL MACHINE SIMULATOR TRAINING

Louisiana Cat's virtual simulator training is an easy to use, cost effective and reliable heavy equipment simulator operator training program. Our virtual simulator offers the latest software technology that allows heavy equipment operators to receive the training they need.

Benefits of the virtual simulator training include:

- Improved safety with reduced risks to machines, employees, and property
- Increased production
- Better training flexibility
- Reduced costs for training and machine operation
- Decreased production loss by minimizing the use of production machines for training

The following virtual simulator programs are available:

TRACK TYPE TRACTOR

This entry level operator training is designed to train and orient an entry level operator on basic machine operation, skills and application knowledge. The simulator features the same joystick controls found on new X-Series dozers.

The simulator is equipped with a motion platform that allows the user to feel vibration and movement when the simulated machine is running during training exercises.



Cost: \$1,100 per day plus Delivery of Simulator

HYDRAULIC EXCAVATOR

This entry level operator training is designed to train and orient an entry level operator on basic machine operation, skills and application knowledge. The Hydraulic Excavator simulator features a variety of programs from skills test to bucket placements and loading of trucks.

Training exercises include:

- Machine Walk Around
- Controls Familiarization
- Bucket Placement
- Loading & off-Loading the Machine from a Lowboy Trailer
- Trenching
- Truck Loading
- Bench Loading
- Setting a Trench Box & Pipe
- Backfilling
- Completing a Production Cycle
- Using a Quick Coupler



Cost: \$1,100 per day plus Delivery of Simulator

ARTICULATED TRUCKS

This entry level operator training is designed to train and orient an entry level operator on basic machine operation, skills and application knowledge. The Articulated Truck simulator system features authentic controls combined with simulated applications. It also features an oscillating hitch system that separates the front from the bed/back. Learning how the truck handles in the safety of the virtual environment will help alleviate many of the issues associated with tipping and driving such a large piece of heavy equipment on an actual worksite.



Cost: \$1,100 per day plus Delivery of Simulator

Training Request Form

COMPANY NAME:			
TRAINING SITE ADDRESS:			
CONTACT NAME/PHONE AT TRAINING SITE:	NAME:		
	PHONE:		
TYPE OF TRAINING REQUESTED: (CHECK ONE)	<input type="checkbox"/>	BASIC MACHINE SAFETY AND FAMILIARIZATION	Duration: ½ day session Fee: \$650* per ½ day session plus Instructor Travel Expenses <small>*Customer Supplied Equipment and Site.</small>
	<input type="checkbox"/>	LEVEL I – COMPETENT OPERATOR TRAINING	Duration: 1 day session Fee: \$1,800* per session <small>*Customer Supplied Equipment and Site.</small>
	<input type="checkbox"/>	LEVEL II – PROFESSIONAL OPERATOR TRAINING	Duration: 2 day session Fee: \$1,875* per student <small>*Minimum 2 week advance notice needed.</small>
	<input type="checkbox"/>	TRACK TYPE TRACTOR VIRTUAL MACHINE SIMULATOR TRAINING	Fee: \$1,100 plus Delivery per day
	<input type="checkbox"/>	HYDRAULIC EXCAVATOR VIRTUAL MACHINE SIMULATOR TRAINING	Fee: \$1,100 plus Delivery per day
	<input type="checkbox"/>	ARTICULATED TRUCKS VIRTUAL MACHINE SIMULATOR TRAINING	Fee: \$1,100 plus Delivery per day
MACHINE MODEL:			
MACHINE SERIAL:			
PURCHASE ORDER:			
REQUESTED BY: (YOUR NAME)			
YOUR PHONE:			
OTHER NOTES OR SPECIAL INSTRUCTIONS:			