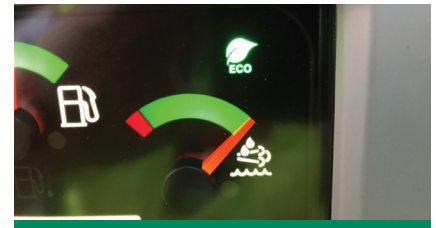


K560

KNUCKLEBOOM LOADER



PERFORMANCE BENCHMARK.

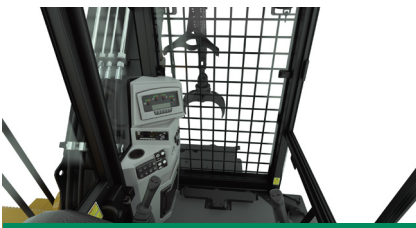
As the industry benchmark for nearly 20 years, the loader hydraulic system features superior multi-functioning capability enabling operators to lift, swing and rotate the grapple simultaneously without impairing performance.

SUPERIOR FEEL.

The precisely tuned pilot controls provide feedback through the joysticks and foot pedals during dynamic operations providing the operator a superior feel of the machine. This results in smoother movements and finer controllability.

OPERATING MODES.

Select from three operating modes to meet fuel consumption and production requirements. All modes maintain a consistent system pressure which allows lift capacity and swing torque to remain equal regardless of the mode selected.



OPERATOR COMFORT.

The new all down stabilizer function provides uniform stabilizer cylinder force improving machine footing. Combined with a quiet cab, great visibility and a powerful HVAC system keep operators comfortable and productive.



EXCELLENT SERVICEABILITY.

Ground level access of engine, fuel, pilot, case drain filters and the standard electric hydraulic oil fill pump make for safe, easy service. The new grapple rotate flushing reminder ensures oil is circulated back through the filter.



GREATER DURABILITY & RELIABILITY.

The hydraulic system and components have proven to be the most durable system ever put in a knuckleboom loader. Extreme duty booms and structures are designed to withstand heavy side-to-side delimiting applications day in and day out.

K560 SPECIFICATIONS

Engine Model	Cat® C4.4 ACERT™	Fuel Capacity	100.0 gal 378 L	Maximum Reach	32' 0" 9.75 m
Gross Power	173 hp 129 kW	DEF Capacity	5.0 gal 19 L	Transport Width	8' 6" 2.57 m
Engine Speed	1800 rpm	Swing Torque	49,173 lb-ft 66 870 N · m	Transport Height	13' 13" 4.04 m
Weight	33,800 lb 15 331 kg	Swing Speed	11 rpm	Transport Length	52' 1" 15.88 m

Weight accounts only for the loader and all transportation dimensions are of a trailer mounted loader.

POWERTRAIN

- Cat C4.4 ACERT engine certified to EPA Tier 4 Final
- Primary and secondary fuel filters, including water separator
- Electric fuel priming pump
- Electric fuel transfer pump
- 2-Stage air cleaner
- Oversized cooling system
- Engine driven, on demand cooling fan
- Engine auto idle down

HYDRAULICS

- Excavator style "negacon" pump control system
- Variable displacement pumps
- High performance, multi-functioning main control valve
- Bar slasher/delimiter hydraulic package
- In-line return filter
- Electric hydraulic oil fill pump
- Pilot accumulator for boom lowering
- Manual boom lowering control valve

ELECTRICAL

- 100 ampere alternator
- 24-volt electric system with 2 12-volt batteries
- Main disconnect switch with Diesel Exhaust Fluid (DEF) purge indicator light
- 6 halogen working lights
- 1 halogen engine compartment service light
- 20 circuit electric swivel
- Product Link™ Ready

OTHER STANDARD EQUIPMENT

- Extreme-duty delimiting boom and stick
- Heavy-duty, extended length center mount sub-frame
- Flat top sub-frame deck with bolt-on skid resistant fenders
- Bolt-on sub-frame ladder
- 12" (305 mm) grapple mounting knuckle
- Ground level remote fuel and engine oil filters
- S-O-S sampling ports
- Ecology drains (engine oil, DEF, hyd tank)

SALES AND SERVICE

Sold and serviced exclusively through Weiler Forestry dealers worldwide

WWW.WEILERFORESTRY.COM

OPERATOR ENVIRONMENT

- Enclosed cab with swing out front window guard meeting SAE J2267
- Dual pilot joystick control with foot pedal swing
- Tinted, reverse slope windshield and skylight
- Sunshade
- High capacity HVAC system
- Air suspension high back seat
- AM/FM/Bluetooth Radio
- 24-volt to 12-volt converter and 2 12-volt power ports
- Windshield wiper
- Advanced Operating Modes: Power, Run, Economy
- All down stabilizer controls
- Stabilizer movement and pilot arming alarm
- Integrated trailer hydraulic landing gear control
- Computerized Monitoring System

OPTIONAL EQUIPMENT

- Extended Single "V" or Double "V" heels
- Delimiter & Trailer Package
 - Includes: 426 Delimiter & 50' (15.2 m) Crawler Trailer with Hyd Landing Gear
- Delimiter & Trailer Ready
 - Includes: Integrated trailer hydraulic landing gear controls
- 4548 Straight Narrow Jaw (Grapple Saw Ready w/ 3 Port Swivel)
- 4548 Tapered Wedge Jaw (Grapple Saw Ready w/ 3 Port Swivel)
- 5055 Straight Narrow Jaw (Grapple Saw Ready w/ 3 Port Swivel)
- 5055 Tapered Wedge Jaw (Grapple Saw Ready w/ 3 Port Swivel)
- 5055 Straight Narrow Jaw
- 5055 Tapered Wedge Jaw
- 2 Additional bolt-on sub-frame ladder
- Slasher Hydraulics Adapter (JIC to O-Ring Face Seal)

WARRANTY

12 months standard, extended warranty available