

Louisiana Cat's Product Health Connect®

A data driven solution designed to help you plan engine maintenance and better understand your engine operation

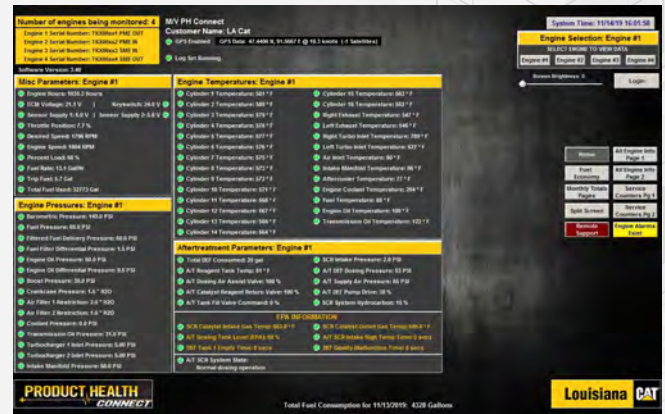
Louisiana Cat's Product Health Connect® is an advanced remote monitoring system for your engine assets. The system compiles the engine ECM data into organized reports, allowing you to better manage your vessel. Built-in analytics alert you to identify potential trouble on the horizon and sends notifications when further investigation is necessary.

You depend on your engines to perform and when questions arise, you need answers quickly. Having this data aids in remote diagnostics and often allows for issue resolution while at sea. When a technician is necessary, having the data in hand before being dispatched aids in the ability to have the required parts when arriving at the vessel.

An optional on-board touchscreen gives your crew the ability to see pertinent engine information in a side-by-side comparison to quickly spot disparities.

You'll have the assurance of being in touch with Louisiana Cat's team of experts through our Product Health Center. The system is designed to give you the necessary data to respond as quickly as possible, when needed. If an engine generates an alarm, alerts are emailed immediately.

Product Health Connect® will help you maximize "up-time" and reduce owning and operating costs.





Product Health Connect[®]

BENEFITS

Electronic Transmission of Data

- » 2 Standard transmissions per day containing available parameters
- » Instant notifications
(based on your communication system)
 - Yellow and Red alerts from ECM
- » Monthly/Weekly Engine Management & Alarm Summary reports

Touchscreen Option

- » Crew can grant technician access to view live data

Safe and Reliable

- » Read-only operation helps protect against cybersecurity threats

Custom Reporting

- » Fuel reporting based on vessel GPS
- » Emissions related daily/monthly reports
- » Mode-of-Operation Fuel Reporting
(speak with our team about your specific needs)

Product Health Center

Our state of the art facilities in Reserve and New Iberia, La, are staffed with a top level team whose primary goal is to reduce your owning and operating costs, while providing you with maximum engine "up-time."

- » Repair and Service Recommendations
- » Data Storage and Management
- » Condition Monitoring Reports
- » Trend Analysis
- » Predictive Analytics

Need other customized engine reports?
Speak to our team to identify where we

ENGINE PROTECTION OVERRIDE ACTIVE

ALERT: An alarm was received for a High Coolant Temp Shutdown on the SME. That alarm included an event indicating that the Engine Protection Override switch went active on the engine at approximately the same time. This override event is still active with the engine running well. If this engine experiences high coolant temps again, the engine will not shut itself down with the Protection Override switch active and will cause significant failures on the engine.

EXHAUST TEMPERATURE SENSOR

ALERT: The right exhaust temperature indicates a failed sensor. The current state shows that the sensor is always reading near 550 F both when the engine is off and under loaded conditions. If the mode of failure leads to erratic readings, it has the potential to create a false high event causing an engine shutdown during critical maneuvers.

COOLANT TEMPERATURE LOW

ALERT: The coolant temperature is not reaching the desired operating temperature for this engine. This can be due to water temperature regulator that has failed in the open position. This can cause the engine operating temperature to be too low during partial load operation. Low engine operating temperatures during partial loads could cause an excessive carbon buildup inside the cylinders. This excessive carbon buildup could result in an accelerated wear of the piston rings and wear of the cylinder liner.

Contact Louisiana Cat to learn more:

800-723-5262

MarineSupport@LouisianaCat.com

844-307-2549

OffshoreService@LouisianaCat.com

