

S450 WHEEL SKIDDER



POWERFUL DRIVETRAIN.

The powershift transmission features more gears evenly distributed in the working range. The field proven lock up torque converter combined with high axle ratios provide maximum fuel efficiency and powerful pulling performance.



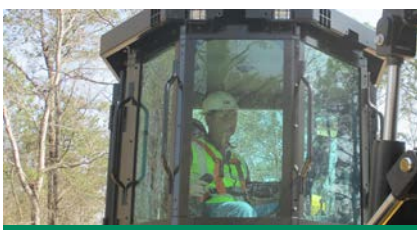
MACHINE FUNCTIONALITY.

Independent front and rear differential locks improve traction without impacting maneuverability. Strong multi-functioning hydraulics improve productivity allowing operators to steer and operate other functions simultaneously.



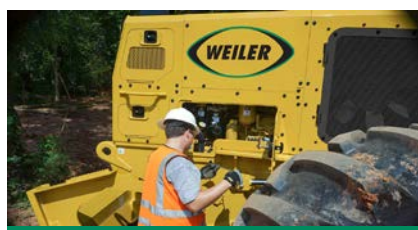
STRONG GRIP.

The HD box section grapple tong shape and raised edges provide superior clamping force while internal welding and reinforcements extend life. The biomass grapple tongs offer increased capacity and opening for small wood applications.



OPERATOR COMFORT.

The exclusive advanced ride management seat suspension improves operator comfort and ride quality with a smoother, more stable ride. Combined with a quiet cab and a powerful HVAC system keep operators comfortable and productive.



EXCELLENT SERVICEABILITY.

Debris is kept out of the engine compartment utilizing a compartmentalized cooling system and engineered airflow forcing hot air out of the machine. Tilting cab provides access for trouble shooting and cleanout to minimize downtime.



GREATER DURABILITY & RELIABILITY.

The cross-flow cooling system keeps the engine, transmission and hydraulics cool, extending component life. Dual tapered roller bearing upper and lower hitch pins, increased hitch spacing, solid nose and bolt on panels increase durability.

S450 SPECIFICATIONS

Engine Model	Cat® 7.1 ACERT™	Wheelbase	155.1" 3940 mm	Ground Clearance	24.1" 612mm
Gross Power	250 hp 186 kW	Weight	48,333 lb 21 923 kg	HD Box Grapple Capacity	19.0 ft² 1.77 m²
Engine Speed	2200 rpm	Transport Width	12' 2" 3.70 m	HD Box Grapple Opening	135.0" 3429 mm
Fuel Capacity	99.8 gal 378 L	Transport Height	11' 4" 3.45 m	Biomass Grapple Capacity	20.8 ft² 1.93 m²
DEF Capacity	5.0 gal 19 L	Transport Length	29' 0" 8.83 m	Biomass Grapple Opening	150.0" 3810 mm

Base configuration includes DF Grapple, 35.5L-32 24PR Tires, Fenders, Winch, Water Tank and Wide Blade. Weight deduct 1,508 lb (684 kg) for 30.5L-32 tires, 963 lb (437 kg) for 30.5L-32 2X Ring tires. Height and ground clearance deduct 2.4" (61 mm) for 30.5L-32 tires.

POWERTRAIN

- Cat C7.1 ACERT engine certified to EPA Tier 4 Final
- Primary and secondary fuel filters, including water separator
- Electric fuel priming pump
- Electric fuel transfer pump
- Centrifugal air pre-cleaner
- 2-Stage air cleaner
- Cross-flow cooling system with swing out cores
- Swing out air condition condenser and fuel cooler
- Hydraulically driven, on demand reversing cooling fan
- Powershift transmission with lock-up torque converter
- Cat HD axles, approved for odd size dual tires up to 30.5L-32 with 24.5L-32 and wide tires up to 73-44 with chains
- Independent front and rear differential locks
- Lubed for life universal joints and HD drive shafts
- Enclosed disc service brakes
- Spring applied, hydraulically released parking brake

ELECTRICAL

- 115 ampere alternator
- 24-volt electric system with 2 12-volt batteries
- Main disconnect switch with Diesel Exhaust Fluid (DEF) purge indicator light
- Jump start posts
- Product Link™ Ready

OPERATOR ENVIRONMENT

- Enclosed OPS/FOPS/ROPS certified cab
- High capacity HVAC system
- Air suspension seat with harness seat belt
- AM/FM/Bluetooth Radio
- 24-volt to 12-volt converter and a 12-volt power port
- 2 Beverage holders
- Computerized Monitoring System

SALES AND SERVICE

Sold and serviced exclusively through Weiler Forestry dealers worldwide

WEILERFORESTRY.COM

HYDRAULICS

- Load-sense hydraulics
- Variable displacement pumps
- High performance, multi-functioning main control valve
- In-tank return filter

OTHER STANDARD EQUIPMENT

- Heavy-duty frames
- Dual tapered roller bearing upper and lower center hitch
- Heavy-duty limb risers
- Wide blade
- Ecology drains (engine oil, engine coolant, hyd tank, axles, transmission)
- Tilt Cab
- Segregated engine/CEM and cooling compartments
- Single side engine service
- S-O-S sampling ports

OPTIONAL EQUIPMENT

- Dual function arch/boom and grapple head
- Cable arch and extreme duty fenders
- Industrial arrangement
- HD Box Section or Biomass Plate Grapple Tongs
- Retrieval Ready, Retrieval Winch or Logging Winch
- Grapple Fenders
- Standard or Deluxe Cab
- Wheel or Joystick Steering
- Standard, Deluxe or Premium Working Lights
- Window Screens
- Pressurized Water Tank
- 30.5L-32 NOAW Tires - 126.6" (3216 mm)
- 30.5L-32 Tires - 133.3" (3386 mm), Approved for Chains
- 30.5L-32 2X Ring Tires - 126.6" (3216 mm)
- 35.5L-32 NOAW Tires - 139.1" (3533 mm)
- 35.5L-32 Tires - 145.8" (3703 mm), Approved for Chains
- Ether Starting Aid
- Electric Hydraulic Oil Fill Pump
- Front and Rear Window Wipers

WARRANTY

12 months standard, extended warranty available